



For too long researchers have been dependent upon core facilities for access to real time biomolecular interaction analysis. Finally, this powerful characterization technology is affordable without compromise. SensiQ is the rigorous, semi-automatic, reliable instrument you've been seeking in a personal analyzer.

Biomolecular Interaction Analysis

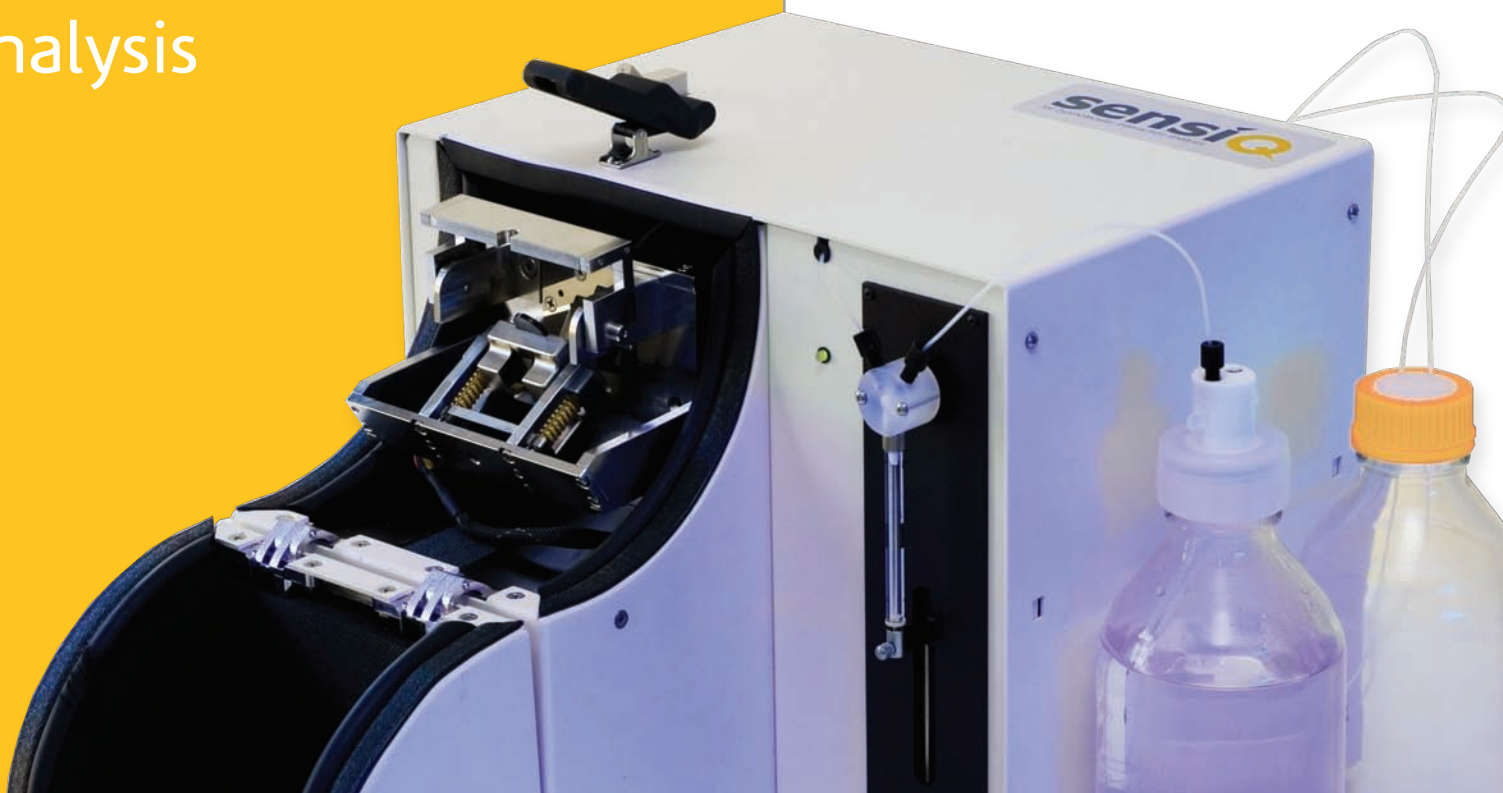
PRODUCT OVERVIEW

APPLICATIONS

Biomolecular binding studies encompass a diverse range of research activities, including binding specificity, antibody selection, drug discovery, ligand fishing, cell signaling, gene regulation, affinity chromatography and structure-function.

A variety of analyses may be performed including:

- Kinetic analysis
- Affinity analysis
- Thermodynamic analysis
- Concentration assays
- Binding stoichiometry and interaction modeling
- Binding conditions (pH, ionic strength, etc)



TECHNICAL SPECIFICATIONS

Real time reference curve subtraction	yes
Channel to channel dead volume	<60nl
Flow cell volume	50nl
Simultaneous injection	yes
Injection volume	10 to 250 μ l
Refractive index range	1.33-1.40
Short time noise	<0.25RU
Long term noise	<0.40RU/min
Flow rate	5-150 μ l/min
Sample loading	manual (syringe)
Sample inject	automatic
Temperature control	15° - 40°C; (+15° / -5° from ambient)

WORKING RANGES

k_a	$1 \times 10^8 \text{M}^{-1} \text{s}^{-1}$
k_d	$10^{-1} - 10^{-6} \text{s}^{-1}$
Concentration	$\sim 10^{-3} - 10^{-11} \text{M}$
K_D	$\sim 10^{-4} - 10^{-11}$

SensiQ utilizes a new data analysis package – Qdat™, from the developer of Scrubber and Clamp. This innovative software greatly reduces the complexity of data clean up and model fitting while enabling non-expert users to extract kinetic and affinity constants in minutes. An assay configuration wizard enables users to record clear, quality data for import into Qdat.

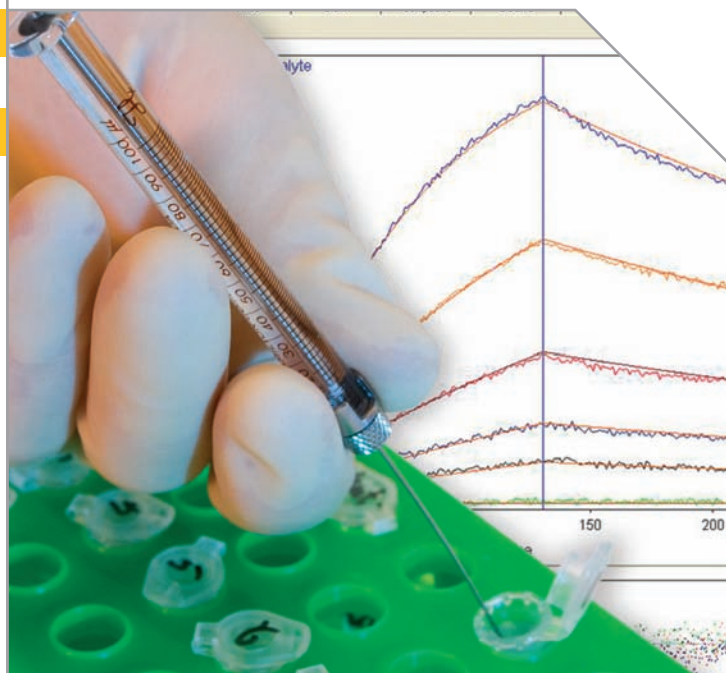
SensiQ sets a new value standard by providing high data quality at a lower cost.

SensiQPO1D0207

© 2007 Copyright Nomadics, Inc. ICx logo is a trademark of ICx Technologies, Inc. Nomadics is a registered trademark of Nomadics, Inc. SensiQ and the SensiQ logo are trademarks of Nomadics, Inc.

Developed by real users, SensiQ provides high data quality in a dual channel biosensor complete with advanced microfluidics, surface attachment chemistry and state-of-the-art data analysis tools. Optimized real time reference curve subtraction and implementation of the well-established double referencing technique yields quality kinetic and affinity data. Tailored for high mass transport rates, SensiQ enables the analysis of rapid binding interactions.

Now quantitative, SPR analysis is available to labs of any size.



CONTACT

Nomadics, Inc.
Bioinstrumentation Group
800 Research Parkway
Suite 100
Oklahoma City, OK 73104 USA

T + 1.405.239.8600
F + 1.405.235.8608

www.nomadics.com

