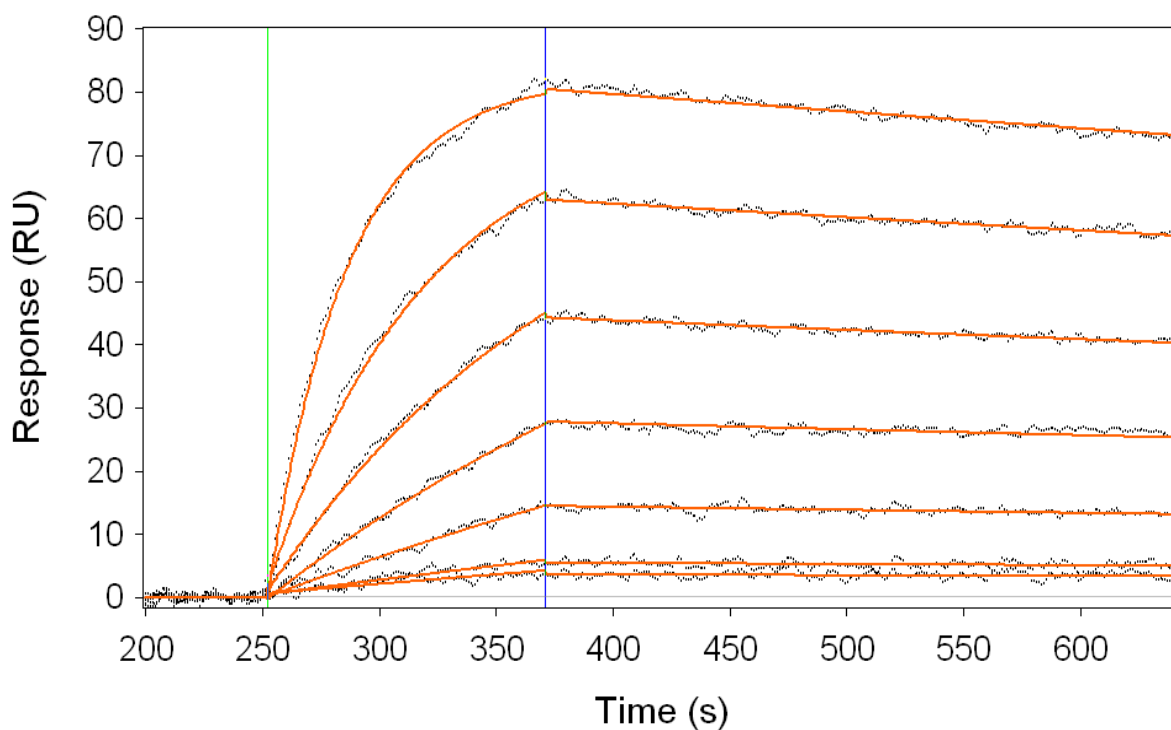


Kinetic Analysis of Protein-Protein Interactions Poster

Common
Revision A.01

Affinity Capture format using rabbit anti-mouse polyclonal Ab.

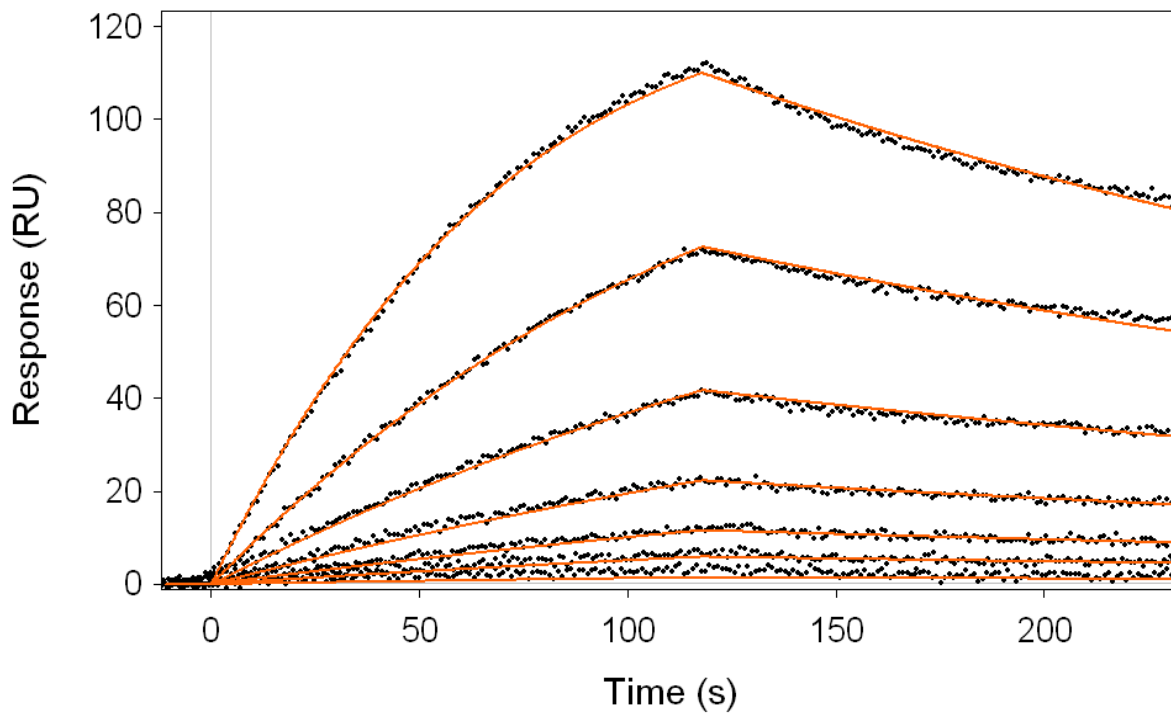


Analyte: BSA

Ligand: anti-BSA monoclonal Ab

k_a	$1.46 \times 10^5 \text{ M}^{-1} \text{ s}^{-1}$
k_d	$3.52 \times 10^{-4} \text{ s}^{-1}$
ResSD	0.67RU
K_D	2.4 nM

Direct binding format using amine coupled Protein A.



Analyte: IgG_{2b}

Ligand: Protein A

k_a	$7.6 \times 10^5 \text{ M}^{-1}\text{s}^{-1}$
k_d	$2.6 \times 10^{-3} \text{ s}^{-1}$
ResSD	1.0RU
K_D	3.4 nM