

Affinity Analysis of Small Molecule Interactions Poster

Common
Revision A.01

6000RU of Neutravidin was immobilized using a modified amine coupling method. Phosphate buffer saline, pH 7.4, was used as sample buffer and continuous flow buffer.

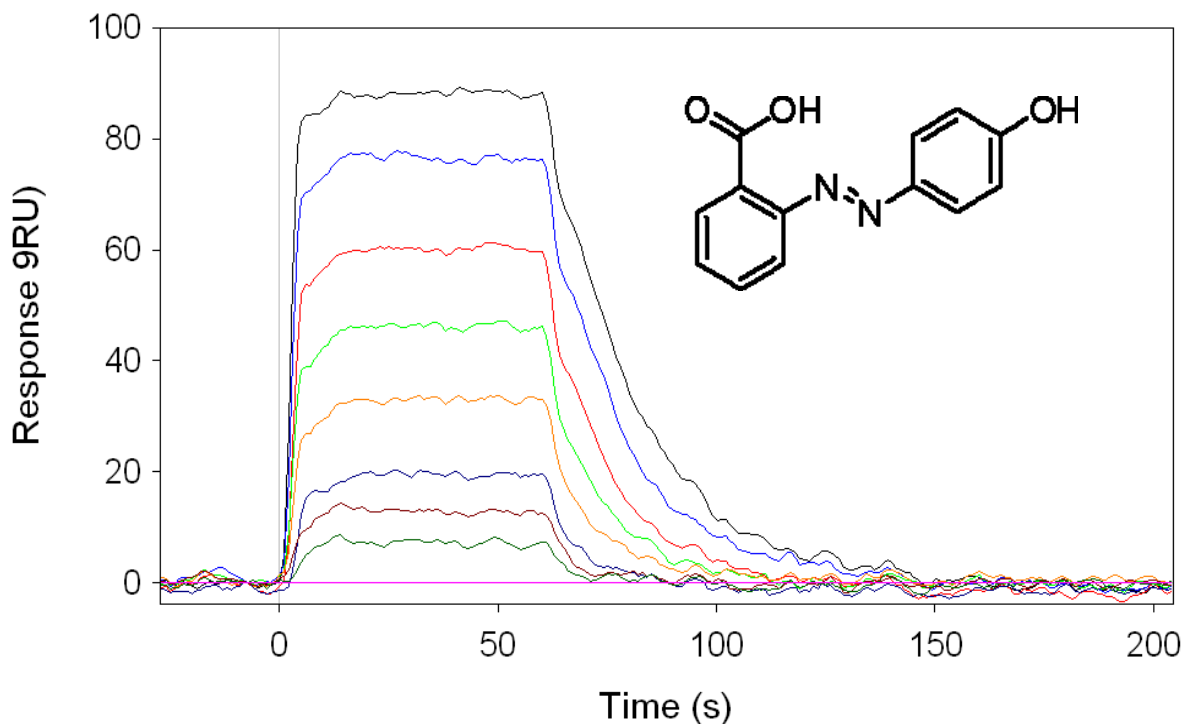
The flow rate was 50 μ l/min.

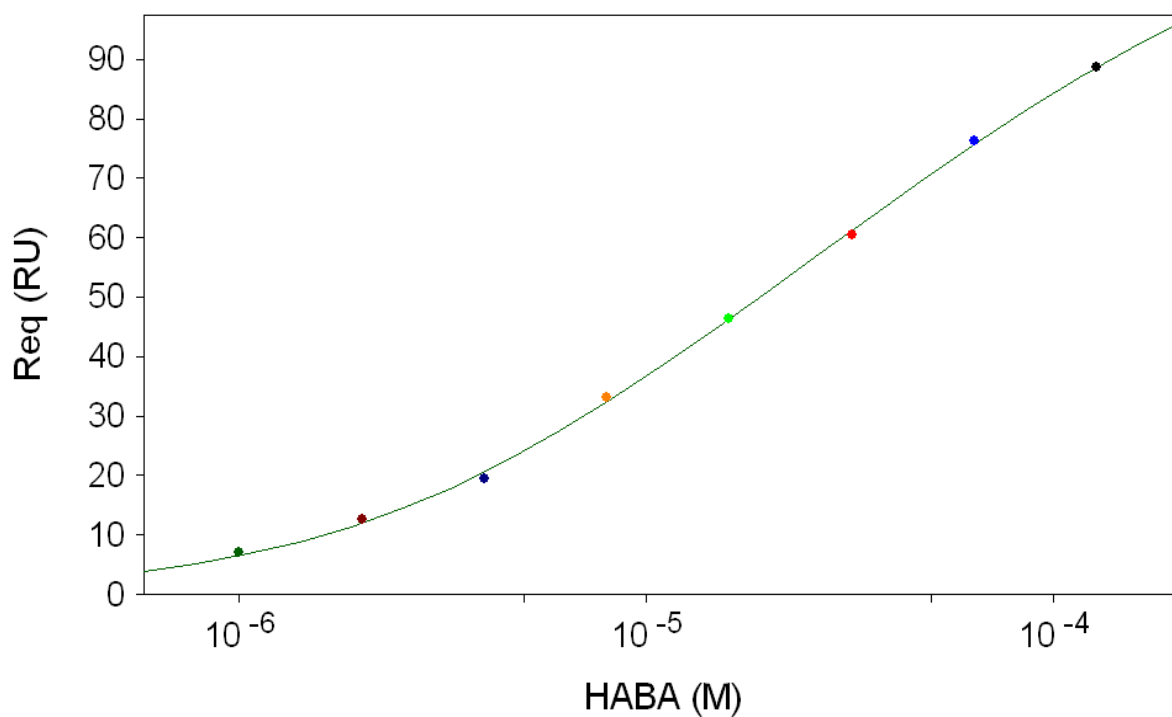
Regeneration was unnecessary as HABA dissociates readily.

A series of HABA concentrations from 130 μ M to 1nM were analyzed.

The data was fitted to a simple solid phase affinity model using Qdat analysis software.

Avidin-HABA (MW 242)





K_{D1} 8.8 μ M
K_{D2} 1.0mM